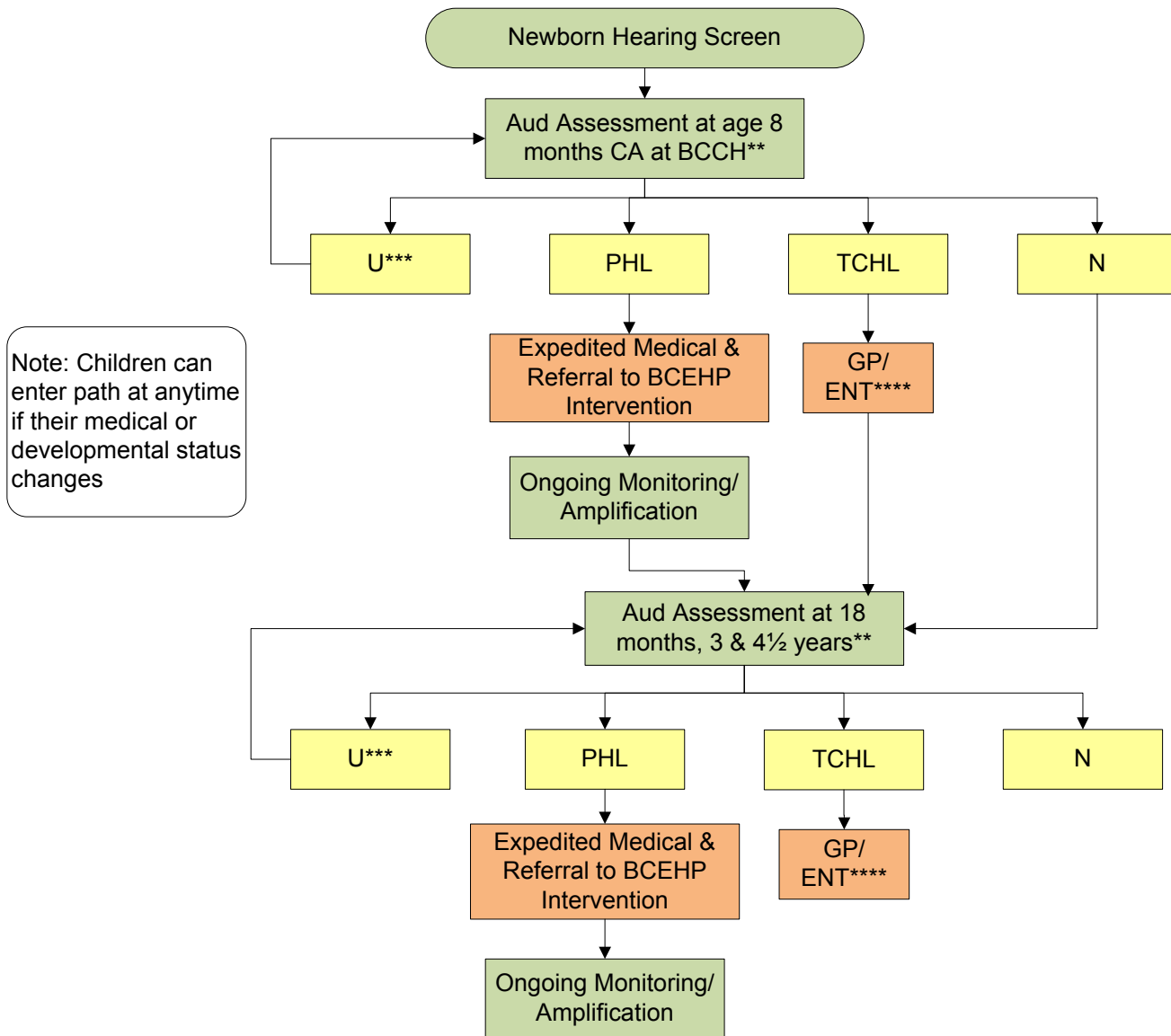


3A. CAREPATH: BCCH Neonatal Follow Up Program

Birthweight \leq 800 gr, Gestational age \leq 25 weeks, IVH Grade 4, PVL, *ECMO/CDH**, ROP Grade 4/lasered, Funded Studies, Directors Discretion



Note: Children can enter path at anytime if their medical or developmental status changes

Outcomes
Tests
Referrals

*See separate CAREPATH (3B) for ECMO/CDH

**NFU intake review completed 2 months prior to corrected dates & BCCH audiology determines whether their audiology assessment is needed for that particular child. Most typically seen at 8 months and 3 years.

*** Maximum of 2 assessment attempts with unknown hearing status, then consultation with BCEHP Program Support Audiologist(s) and consideration of sedated ABR Testing

**** Each GP/ENT visit may initiate a referral to PHA/Team audiologist and/or medical monitoring