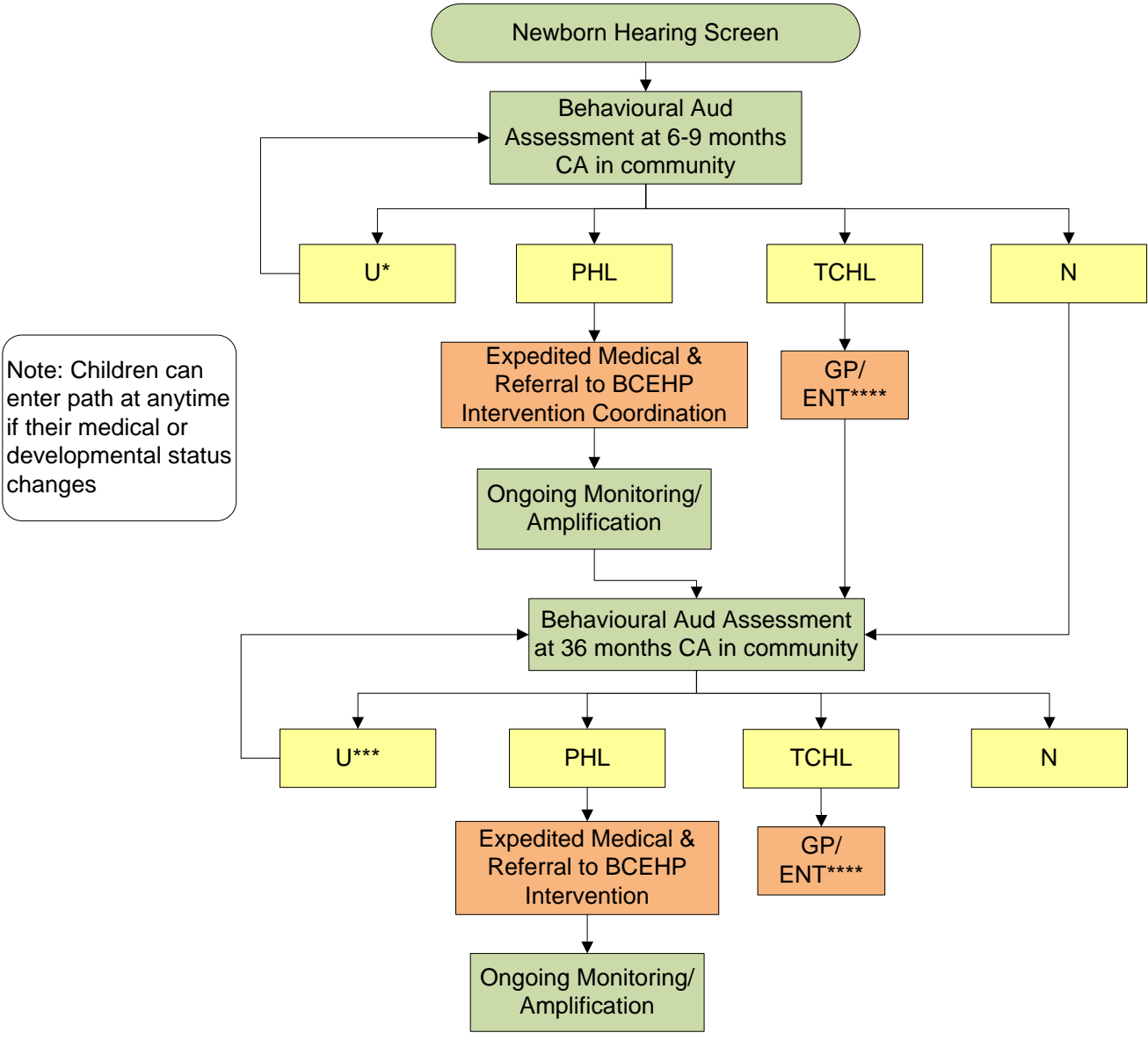


1A. CARE PATH
 Low Birthweight (<1200 gr), Low APGAR, TORCHES, Respiratory Distress, Head Trauma or Brain Disorder, Hyperbilirubinemia



Note: Children can enter path at anytime if their medical or developmental status changes

Outcomes
Tests
Referrals

* Maximum of 2 assessment attempts with unknown hearing status, then consultation with BCEHP Program Support Audiologist(s)
 *** Maximum of 2 assessment attempts with unknown hearing status, consider sedated ABR Testing
 **** Each GP/ENT visit may initiate a referral to PHA/Team audiologist and/or medical monitoring