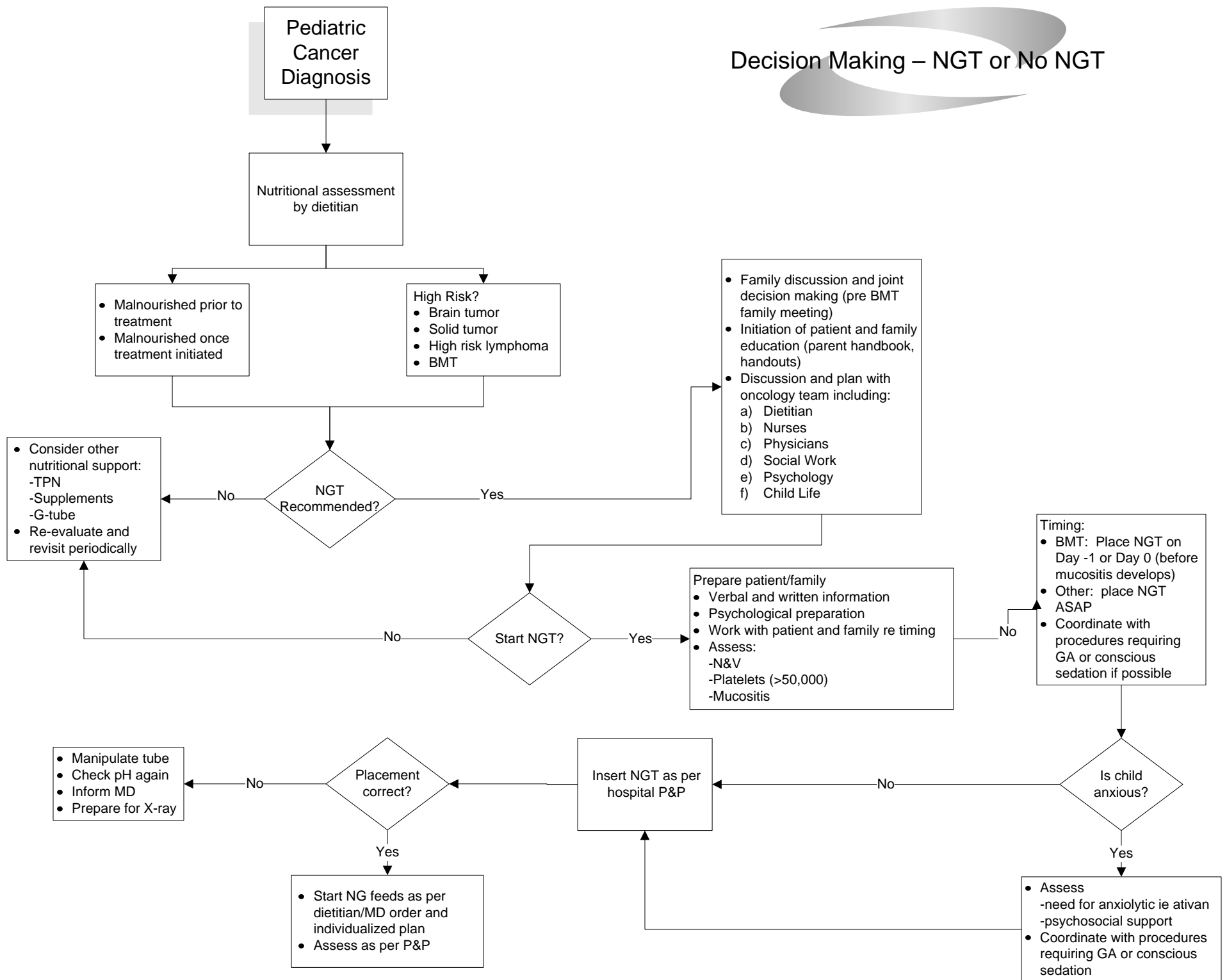
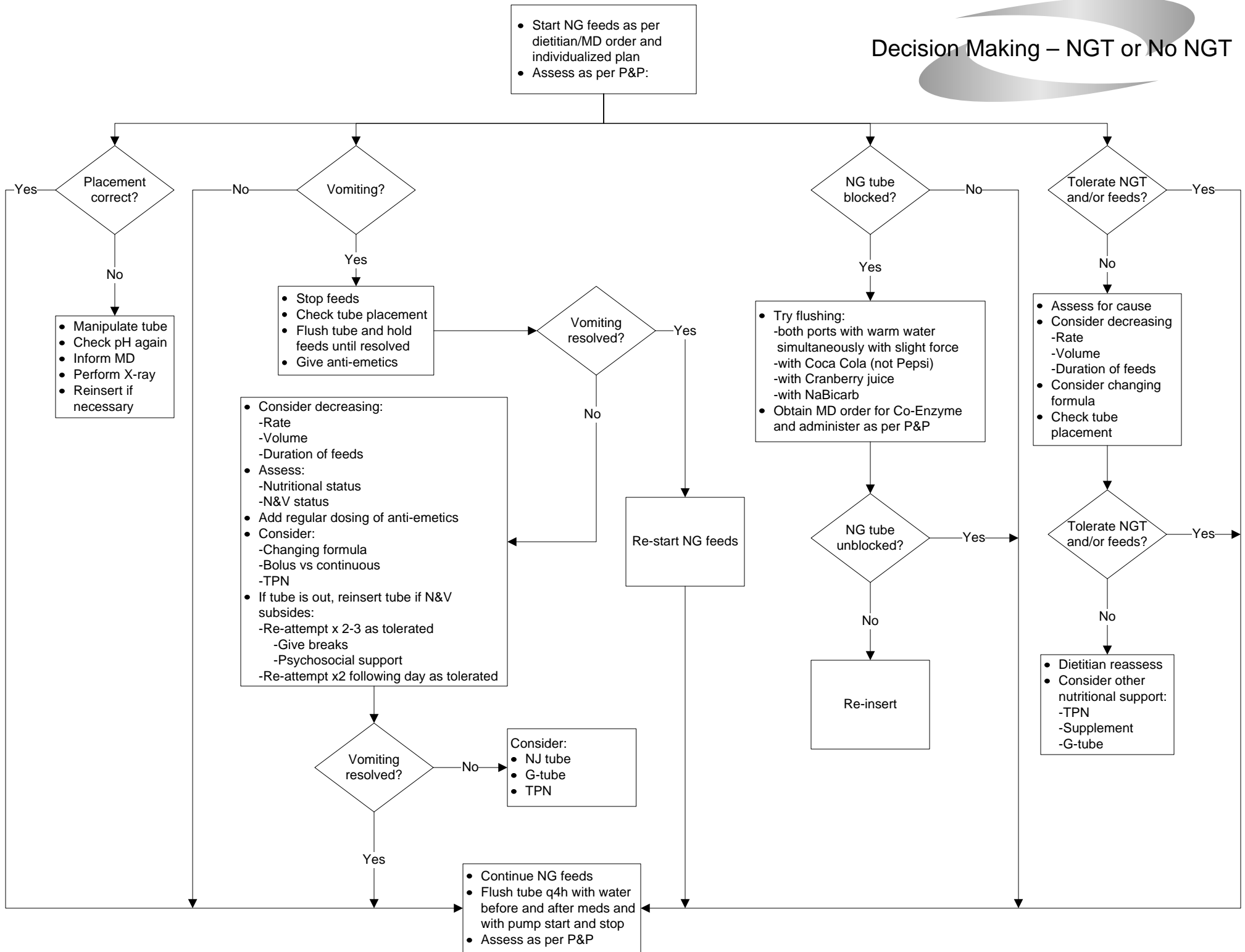


Decision Making – NGT or No NGT



Decision Making – NGT or No NGT



- Start NG feeds as per dietitian/MD order and individualized plan
- Assess as per P&P:

Placement correct?

No

- Manipulate tube
- Check pH again
- Inform MD
- Perform X-ray
- Reinsert if necessary

Vomiting?

Yes

- Stop feeds
- Check tube placement
- Flush tube and hold feeds until resolved
- Give anti-emetics

Vomiting resolved?

No

- Consider decreasing:
-Rate
-Volume
-Duration of feeds
- Assess:
-Nutritional status
-N&V status
- Add regular dosing of anti-emetics
- Consider:
-Changing formula
-Bolus vs continuous
-TPN
- If tube is out, reinsert tube if N&V subsides:
-Re-attempt x 2-3 as tolerated
-Give breaks
-Psychosocial support
-Re-attempt x2 following day as tolerated

Vomiting resolved?

No

Consider:

- NJ tube
- G-tube
- TPN

Vomiting resolved?

Yes

- Continue NG feeds
- Flush tube q4h with water before and after meds and with pump start and stop
- Assess as per P&P

Vomiting resolved?

Yes

Re-start NG feeds

NG tube blocked?

Yes

- Try flushing:
-both ports with warm water simultaneously with slight force
-with Coca Cola (not Pepsi)
-with Cranberry juice
-with NaBicarb
- Obtain MD order for Co-Enzyme and administer as per P&P

NG tube unblocked?

No

Re-insert

Tolerate NGT and/or feeds?

No

- Assess for cause
- Consider decreasing:
-Rate
-Volume
-Duration of feeds
- Consider changing formula
- Check tube placement

Tolerate NGT and/or feeds?

No

- Dietitian reassess
- Consider other nutritional support:
-TPN
-Supplement
-G-tube