



The **VNS generator** will be located underneath the skin on the side of the student's chest.



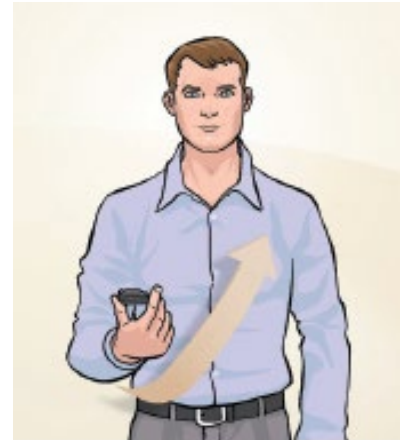
The **VNS magnet** may be a wrist band (watch) style, or a Pager (belt-clip) style



### Magnet Safety Considerations:

- Do not hold the magnet over the generator for more than 2 seconds. This will temporarily disable the VNS.
- Never put or store the magnet near credit cards, televisions, computers, computer disks, microwave ovens, watches, other magnets, or items affected by strong magnetic fields. Keep it at least 25 centimeters (10 inches) away.
- Do not drop the magnet. It can break and lose magnetic strength if dropped on a hard surface.

1. **Gather** supplies and Seizure Action Plan and Medical Alert Information (SAP) form.



2. **Place** the magnet over the student's chest area where the VNS generator is.



3. **Swipe** the magnet over the VNS generator for 1 to 2 seconds and then immediately remove magnet from chest area. Repeat swipe(s) as per the SAP.

**NOTE:** If 911 is called, inform them that the student has a VNS.