

CARE PATH Cleft Palate Patients High Risk for Conductive Hearing Loss



Fax Hearing Results to Teams and ENTs

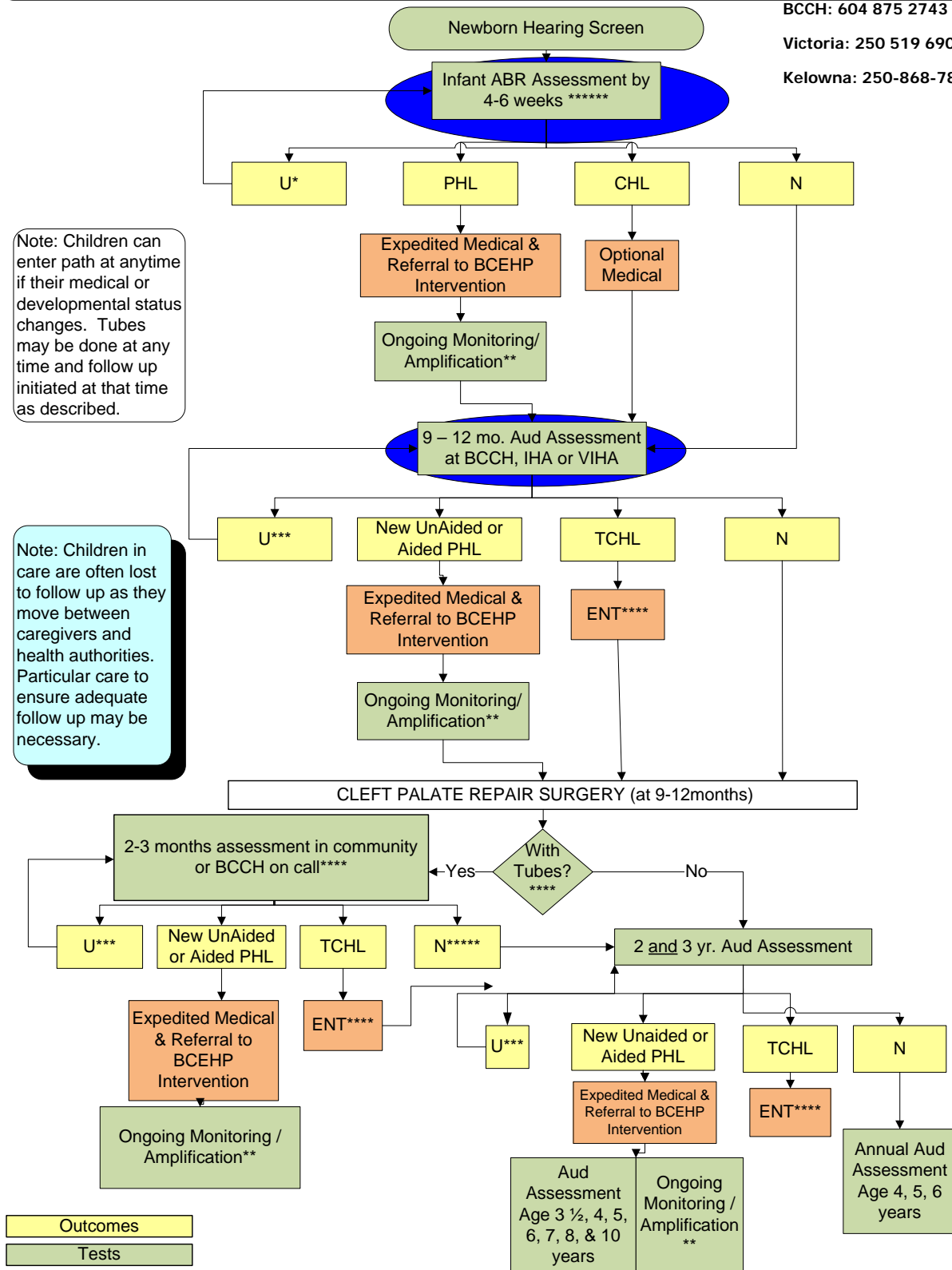
BCCH: 604 875 2743

Victoria: 250 519 6907

Kelowna: 250-868-7809

Note: Children can enter path at anytime if their medical or developmental status changes. Tubes may be done at any time and follow up initiated at that time as described.

Note: Children in care are often lost to follow up as they move between caregivers and health authorities. Particular care to ensure adequate follow up may be necessary.



- Outcomes
- Tests
- Referrals

* Maximum of 2 assessment attempts with unknown hearing status, then consultation with CPC Team Audiologist
 ** Assess suggested every 6 months through age 3, then annually at 4, 5, 6, 7 and 8 and age 10 years or local practice
 *** Maximum of 2 assessment attempts with unknown hearing status, consider sedated ABR Testing
 **** Each GP/ENT visit may initiate a referral to community or BCCH Audiologist
 ***** Post tube hearing assessment should happen after any tube insertion. ENT recheck every 6 months with tubes
 ***** Ensure documentation for declining service is completed, if appropriate