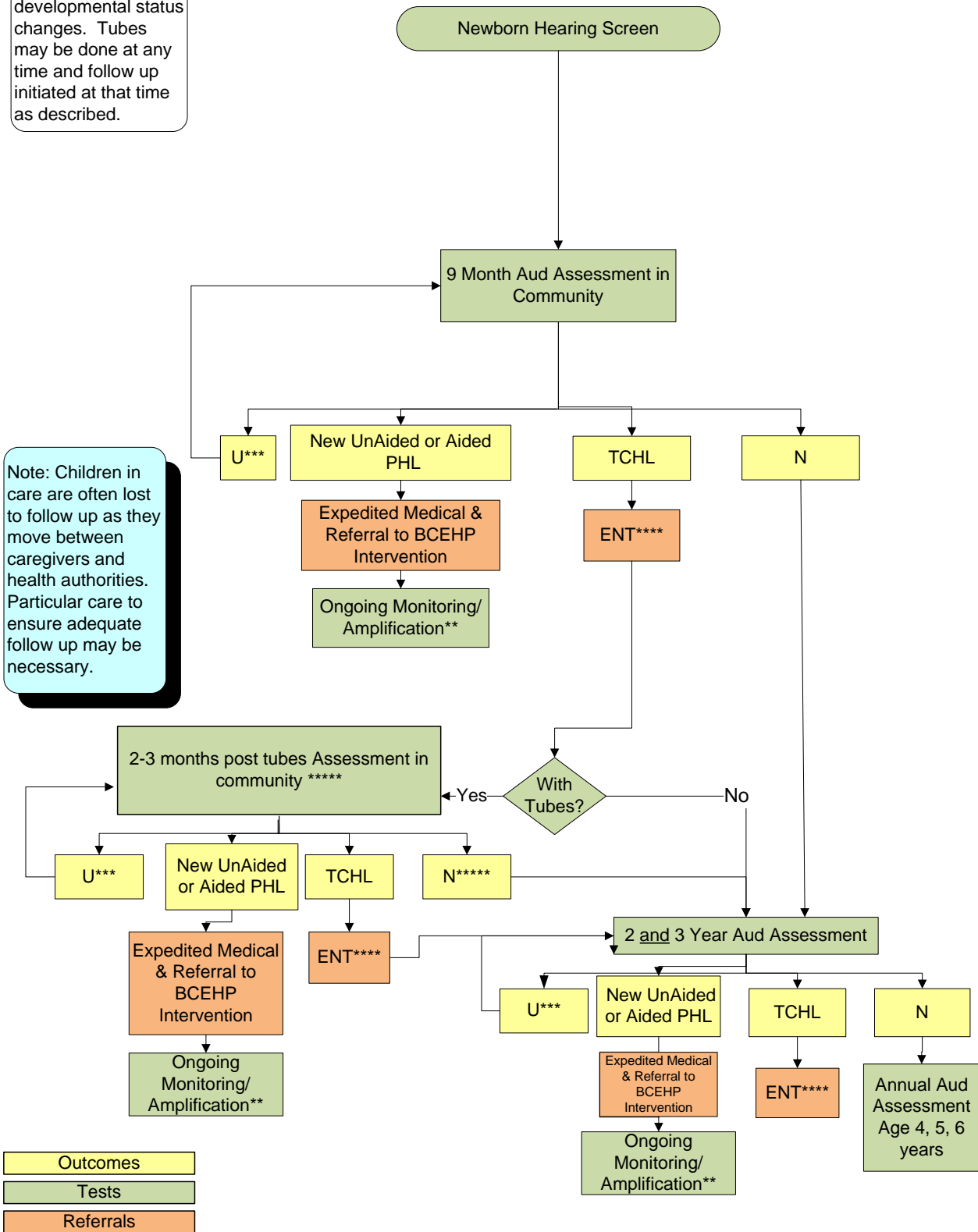


# CARE PATH 4 Down Syndrome Patients High Risk of Conductive Hearing Loss

rev.mar2012

Note: Children can enter path at anytime if their medical or developmental status changes. Tubes may be done at any time and follow up initiated at that time as described.

Note: Children in care are often lost to follow up as they move between caregivers and health authorities. Particular care to ensure adequate follow up may be necessary.



\*\* Assess suggested every 6 months through age 3, then annually at 4, 5, 6, 7 and 8 and age 10 years or local practice  
 \*\*\* Maximum of 2 assessment attempts with unknown hearing status, consider sedated ABR Testing  
 \*\*\*\* Each GP/ENT visit (non expedited) may initiate a referral to PHA/Team audiologist  
 \*\*\*\*\*Tubes can happen at any time, a post assessment in the community is recommended. Recheck with ENT every 6 months