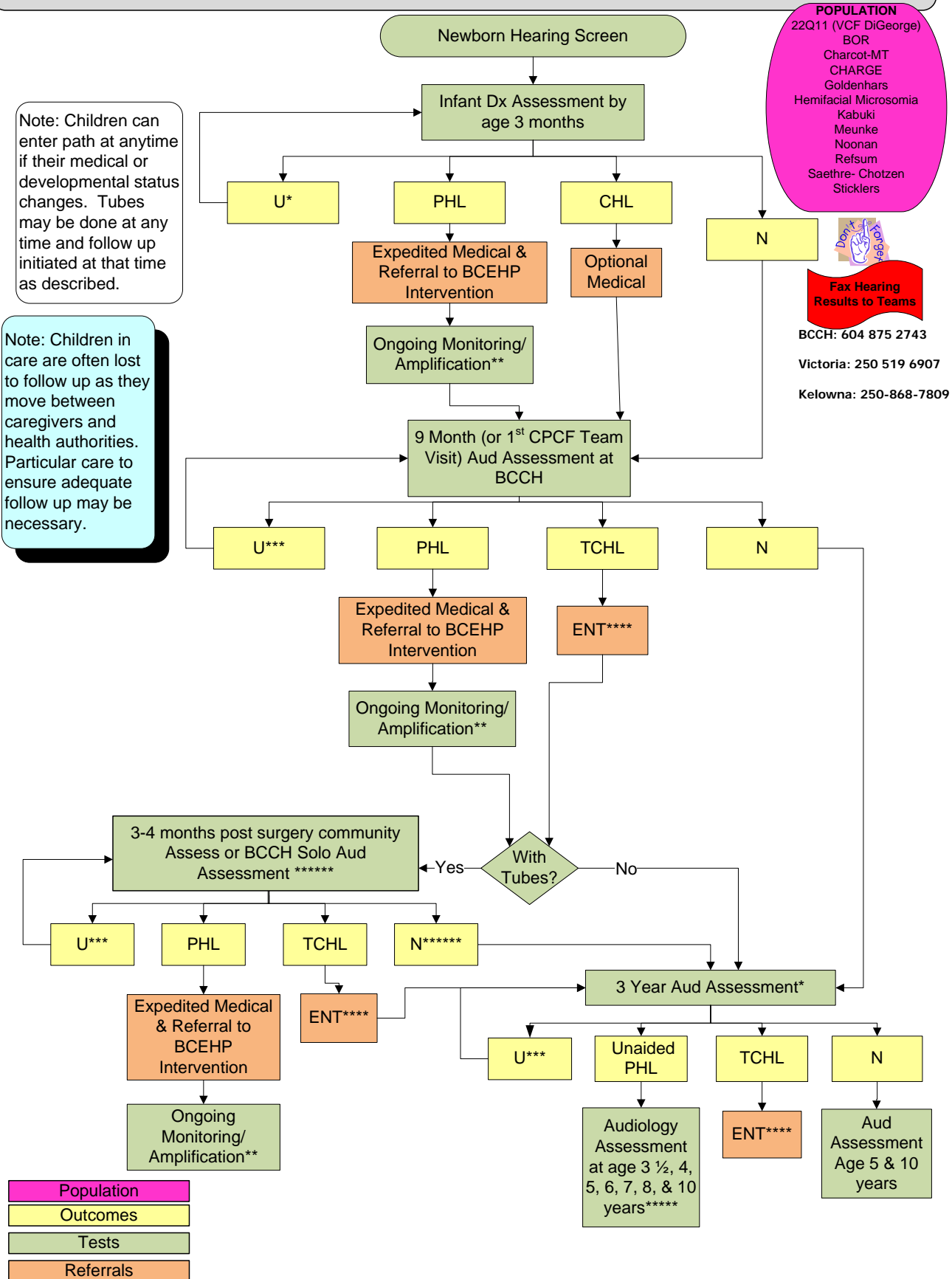


CARE PATH 2

Evidence of lower risk of late onset permanent hearing loss

rev.mar2012



- POPULATION**
- 22Q11 (VCF DiGeorge)
 - BOR
 - Charcot-MT
 - CHARGE
 - Goldenhars
 - Hemifacial Microsomia
 - Kabuki
 - Meunke
 - Noonan
 - Refsum
 - Saethre- Chotzen
 - Sticklers



Fax Hearing Results to Teams

BCCH: 604 875 2743

Victoria: 250 519 6907

Kelowna: 250-868-7809

Note: Children can enter path at anytime if their medical or developmental status changes. Tubes may be done at any time and follow up initiated at that time as described.

Note: Children in care are often lost to follow up as they move between caregivers and health authorities. Particular care to ensure adequate follow up may be necessary.

- Population
- Outcomes
- Tests
- Referrals

* Maximum of 2 assessment attempts with unknown hearing status, then consultation with BCEHP Clinical Audiologist
 ** Assess suggested every 6 months through age 3, then annually at 4, 5, 6, 7 and 8 and age 10 years or local practice
 *** Maximum of 2 assessment attempts with unknown hearing status, consider sedated ABR Testing
 **** Each GP/ENT visit (non-expedited) may initiate a referral to PHA/Team audiologist
 *****Ongoing monitoring determined on individual basis with community care team
 *****Recheck with ENT every 6 months